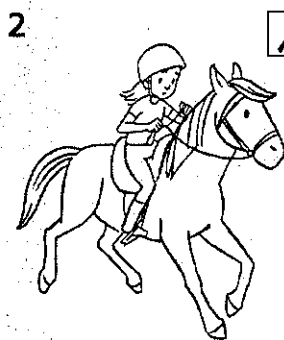


# Unit 5

## Arkusz 10

**Look and write.**  
Popatrz i napisz.

dance                      ride a horse                      sing                      ride a bike



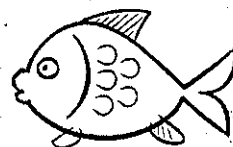
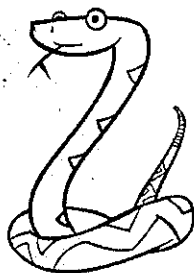
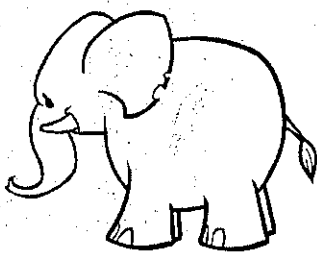
1 I can \_\_\_\_\_.


3 I \_\_\_\_\_.

2 I can't \_\_\_\_\_.

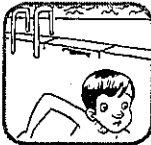
4 I \_\_\_\_\_.

**Read and write. Then match.**  
Przeczytaj i napisz. Następnie połącz.




1 I'm small. I haven't got  \_\_\_\_\_ or hands. I've got fins and



\_\_\_\_\_ . I can't climb. I can  \_\_\_\_\_ .

What am I?

2 I'm big. I've got four strong legs, two big  \_\_\_\_\_

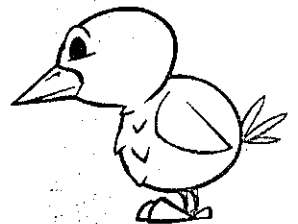
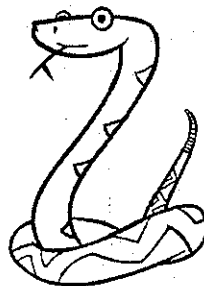
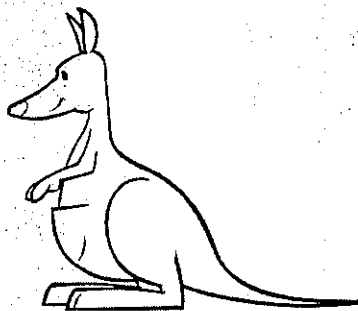
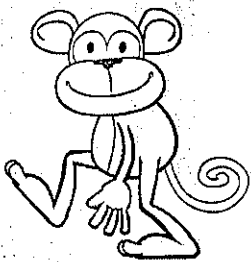
and a long nose. I can't  \_\_\_\_\_ . I can 

\_\_\_\_\_ and run. What am I?

# Review Units 5-6

## Arkusz 21

Find and write. Guess the animals.  
Znajdź i napisz. Jakie to zwierzę?



&	£	#	\$	}	§	•	*	?	{	+	Ø	β	[	<	]	/	=	¶	¥	!	€	(	%	«	@
a	b	c	d	e	f	g	h	i	j	k	l	m	n	o	p	q	r	s	t	u	v	w	x	y	z

1 A: Can you § Ø « \_\_\_\_\_ ?

B: No. But I can { ! β ] \_\_\_\_\_ and = ! [ \_\_\_\_\_ .

I'm a \_\_\_\_\_ .

2 A: Can you # Ø ? β £ \_\_\_\_\_ trees?

B: Yes, but I can't ( & Ø + \_\_\_\_\_ .

I'm a \_\_\_\_\_ .