



Giving directions

1 2.46 Listen and read the dialogue. Answer the questions.

- Which place does Katie want to go to?
- Where is it?

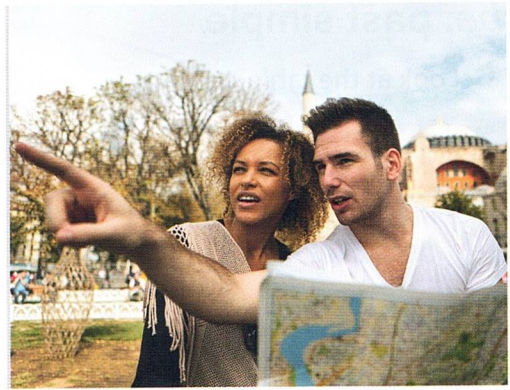
Katie Excuse me. Where's the **police station**, please?

Man It's in **West Street**.

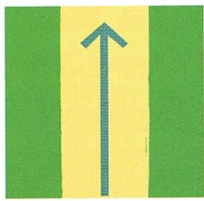
Katie How do I get to **West Street**?

Man Go straight on. **Take the second right. The police station is opposite the cinema.**

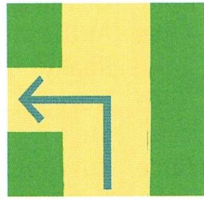
Katie Thanks very much.



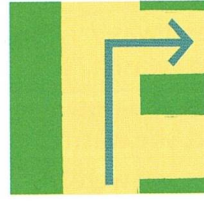
2 2.47 Listen and repeat.



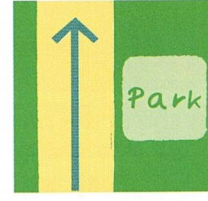
1 Go straight on.



2 Take the first left.

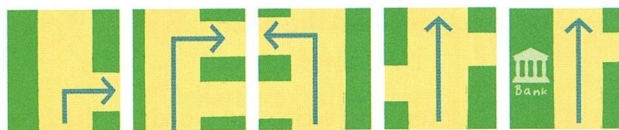


3 Take the second right.



4 Go past the park.

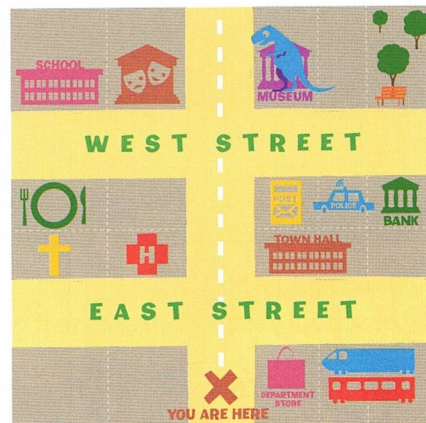
3 Look at the diagrams and write the directions in your notebook.



1 ... 2 ... 3 ... 4 ... 5 ...

5 2.48 Listen to the dialogues and point to the places on the map.

- the cinema
- the supermarket
- the library



6 Work in pairs. Give directions. Don't say where your partner is going. Follow your partner's directions. Where are you?

Go straight on. Take the first right. It's opposite the town hall.

It's the department store.

7 Work in pairs. Prepare a dialogue like the one in exercise 1. Change the **blue** words with different places on the map. Then act out your dialogue in class.

Steps to Success

Repetitorium

4 Match situations 1-3 to reactions a-c. Say the answers aloud.

- Anglojęzyczny turysta pyta cię, jak dojść do poczty. Co odpowiesz?
 - Go straight on and take the first left. Then it's on your left.
 - Excuse me, where's the nearest post office?
 - Yes, there's a small one in the centre of town.
- Chcesz się dowiedzieć, jak dojść do pewnej ulicy. Jak o to zapytasz?
 - How do I get to Dover Road?
 - Do you know Market Street?
 - Do I go straight on or turn left?
- Chcesz się dowiedzieć, czy w pobliżu jest przystanek autobusowy. Jak o to zapytasz?
 - Does the number 5 bus go to town?
 - Have you seen where the buses stop?
 - Is there a bus stop near here?